



# Compact Cartoning Machines and Customized Solutions



Rent



Buy

# We work for your success



We – JW Verpackungstechnik GmbH – represent 28 years of competence and innovation in cartoner development and production.

Since 1989 we have developed, manufactured and sold innovative cartoners for small batches. Both nationally and internationally – for companies in the pharmaceutical, cosmetic, consumer goods, food and other sectors. Get to know us – the perfect interplay between our engineers, technicians and salespeople. Benefit from our expertise, smooth operations and individual products.

We – a private family business – place a high value on training and development, in order to make our team and thereby you successful.

Be a clever fox – as customer or employee!  
We eagerly await you!

# More know-how per squaremetre

**All options listed here relate to the Automatic machine. They are however optionally available on the manual machine.**

- Saving of relevant machine data under format management/ product data management
- Fast format change through easy loading of all required parameters using the format management tab
- PDF export of all format data onto a USB stick
- Optional printing of all format data onto a network printer
- GMP compliant user management consisting of three user levels
- Freely configurable user access rights
- Optional logging of all user actions in the HMI's audit trail
- Ability to cycle all servo drives, drives and cylinders in set-up mode. Diagnosis of cylinder and Initiator statuses
- Monitoring of quality related sensors
- Batch report containing all relevant counters, including the ability to export as PDF or Print
- Ability to create screen shots of all tabs
- Integration into the HMI of third party software components (e.g. Laetus camera systems)
- Status, error and warning display
- Remote diagnosis to identify errors, reducing downtime and minimising the need for on-site service

# Semi-automatic cartoner CCM-MV



Buy

or



Rent

**Starting today...  
Be smarter –  
think differently!**

## WOW! Simply rent



Rent

### Buy or Rent!

- Reduction of staff costs
- Flexible use
- No maintenance costs
- No capital commitment
- No investment risk
- Always the latest technology
- Rental options only available for CCM-MV machines



## More flexibility per squaremetre

### Machine versions

- 800 mm format wheel and 8 stations
- 800 mm format wheel and 10 stations
- 1000 mm format wheel and 8 stations
- 1000 mm format wheel and 10 stations

### Max. nominal speed

30 to 40 cycles per minute  
(depending on product and operator)

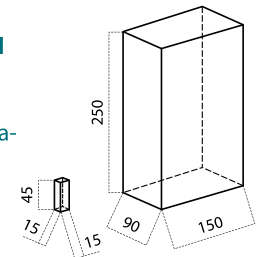
### Available closure techniques

- Tuck in closure
- Hot glue closure
- Combination of tuck in closure and hot glue closure (e.g. fourth flap)
- Crash lock

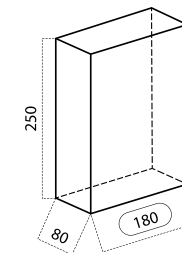
### Example format sizes

#### 800 mm format wheel – 8 stations

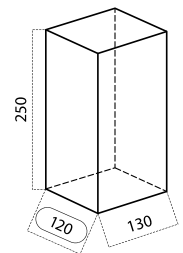
Format range depending on format wheel diameter and number of stations



Possible format range



Max. A dimension (width) available with corresponding B dimension



Max. B dimension (depth) available with corresponding A dimension



# Vertical-automatic cartoner CCM-AV



## More efficiency per squaremetre

### Machine versions

- 800 mm format wheel and 10 stations
- 1000 mm format wheel and 8 stations
- 1000 mm format wheel and 10 stations

### Max. nominal speed

Up to 60 cycles per minute  
(depending on product and process)

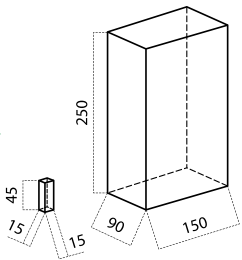
### Available closure techniques

- Tuck in closure
- Hot glue closure
- Combination of tuck in closure and hot glue closure (e.g. fourth flap)
- Customized closure available
- Crash lock

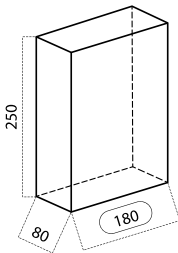
### Example format sizes

#### 800 mm format wheel – 10 stations

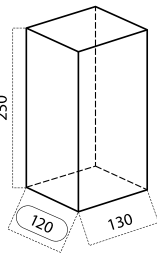
Format range depending on format wheel diameter and number of stations



Possible format range



Max. A dimension (width) available with corresponding B dimension



Max. B dimension (depth) available with corresponding A dimension

# Horizontal-automatic cartoner CCM-AH



## More individuality per squaremetre

### Machine versions

- 600 mm format wheel and 6 stations
- 800 mm format wheel and 6 stations
- 900 mm format wheel and 6 stations

### Max. nominal speed

Up to 60 cycles per minute  
(depending on product and process)

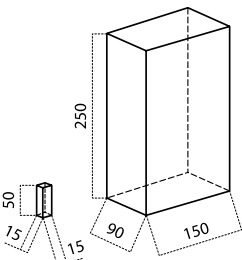
### Available closure techniques

- Tuck in closure
- Hot glue closure
- Combination of tuck closure and hot glue closure (e.g. fourth flap)

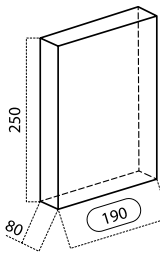
### Example format sizes

#### 600 mm format wheel – 6 stations

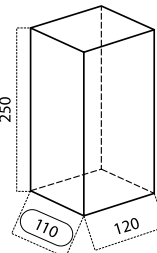
Format range depending on format wheel diameter and number of stations



Possible format range



Max. A dimension (width) available with corresponding B dimension



Max. B dimension (depth) available with corresponding A dimension

# Customized solutions



## Customized solutions and your success are our mission!

Cartoner are our daily business. Our mission is the development of inspiring, customized solutions that help you to succeed. Draw on our expertise. We combine the necessary competencies of a modern machine builder under one roof.

We have separate departments for design, development, tooling and assembly and our programming is in house. This, paired with the flexibility of our sub-suppliers, underpins the success of our work. We offer you responsiveness, reliability and work that is of the highest quality!

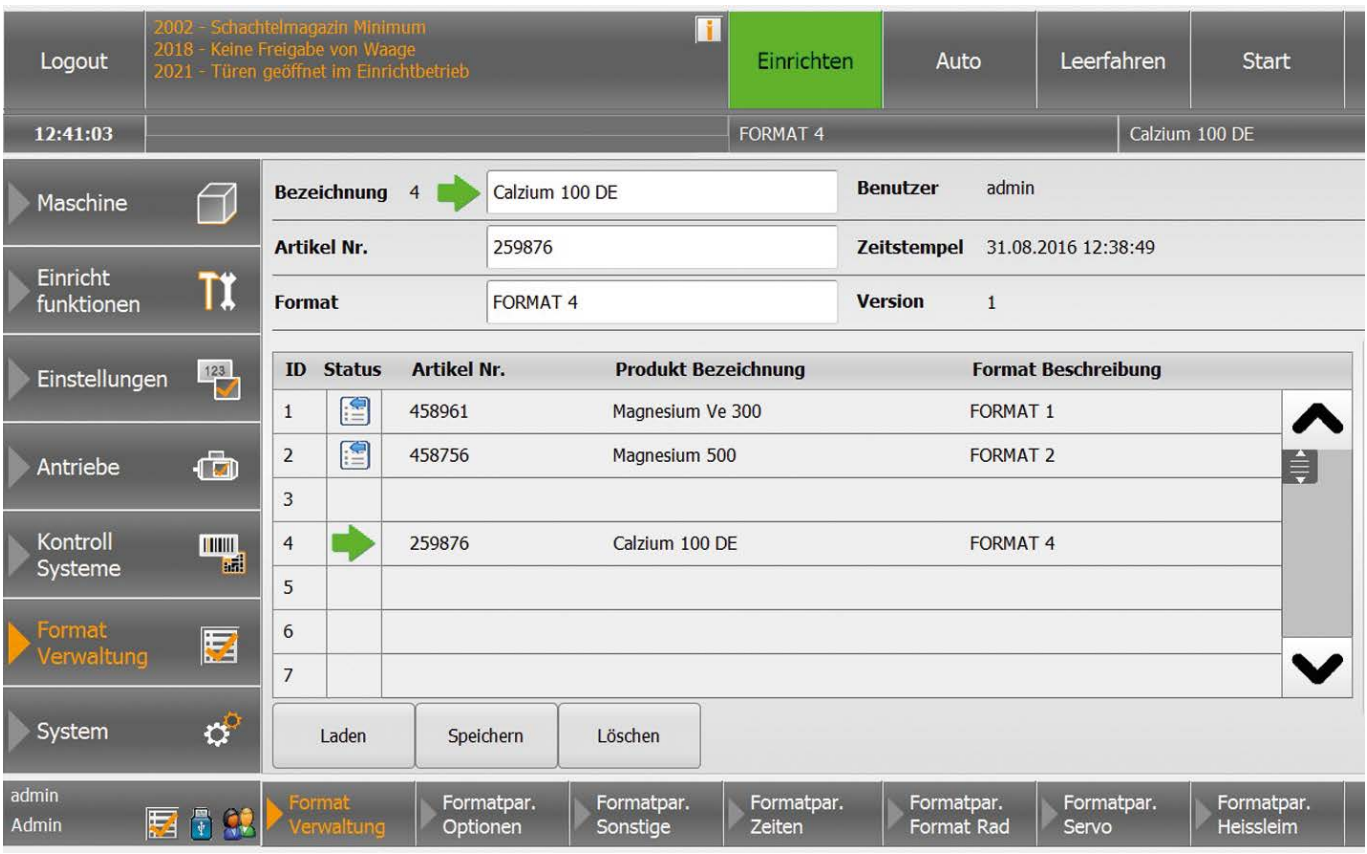
Our cartoning lines are supplemented with advanced automatic feed systems. We readily tailor solutions to your specific requirements using modern controls and the latest drive technology.

Indeed, we are driven by your custom requirements! Whatever you want to package – we will deliver you an optimal solution.





# HMI operating options



# More possibilities per square metre: Optional modules for your success.



Each JW cartoner can be specified for your individual packaging requirements. Barcode reading systems including automatic rejection of faulty products can easily be integrated into our machine. In addition modern coding application and camera systems are available to allow the application and verification of variable lot data.

For our automatic machine the feeding and insertion of pre-folded leaflets is not a problem, as well as the complete integration of a folding device for leaflets, including the feeding and insertion.

And what happens when the completed carton has been discharged? Modern conveyor belt systems allow the transfer to additional JW modules such as labelling units and accumulation systems for further processing.

You can see, from our optional modules the same flexibility is applied: compact to success.



Our automatic machines are fitted with an HMI as standard. These enable you to monitor complex processes via a user friendly display. The HMI facilitates intuitive and effective operation of the machine.

These HMI options can easily be tailored to your specific operational and monitoring requirements. The implementation of standardised open interfaces allows integration with your other automated components.



- Optional and additional modules**
- Coding systems (embossing, hot foil printing, inkjet, laser)
  - Barcode reading and camera systems
  - Feeding and insertion system for pre-folded leaflets (only automatic version)
  - Folding devices incl. feeding/insertion for leaflet (only automatic version)
  - Conveyor belt systems
  - Labelling units
  - Accumulation tables
  - Stacking units
  - Turn tables



## JW Verpackungstechnik GmbH

Im Mündrup 2  
49124 Georgsmarienhütte

Tel. +49 (0) 5401 365 864 0  
Fax +49 (0) 5401 365 864 29

[info@jw-verpackungstechnik.de](mailto:info@jw-verpackungstechnik.de)  
[www.jw-verpackungstechnik.de](http://www.jw-verpackungstechnik.de)